



# Indiana State Department of Health

## Weekly Influenza Report

### Week 8

Report Date: Friday, March 04, 2016

The purpose of this report is to describe the spread and prevalence of influenza-like illness (ILI) in Indiana. It is meant to provide local health departments, hospital administrators, health professionals and residents with a general understanding of the burden of ILI. Data from several surveillance programs are analyzed to produce this report. Data are provisional and may change as additional information is received, reviewed and verified. For questions regarding the data presented in this report, please call the ISDH Surveillance and Investigation Division at 317-233-7125.

### WEEKLY OVERVIEW

Influenza-like Illness - Week Ending February 27, 2016	
ILI Geographic Distribution	Regional
ILI Activity Code	Low
Percent of ILI reported by sentinel outpatient providers	2.70%
Percent of ILI reported by emergency department chief complaints	2.48%
Percent positivity of influenza specimens tested at ISDH	73.3%
Number of influenza-associated deaths to date	19
Number of long-term care facility outbreaks	0
Number of school-wide outbreaks	0



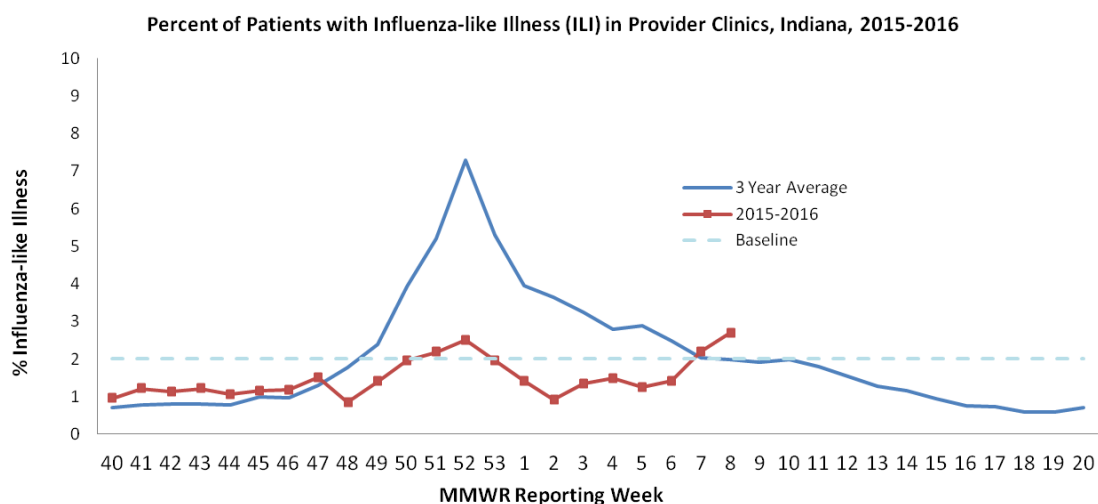
## Indiana State Department of Health

### **SENTINEL SURVEILLANCE SYSTEM**

Data are obtained from sentinel outpatient providers participating in the U.S. Outpatient Influenza-like Illness Surveillance Network (ILINet). Data are reported on a weekly basis for the previous Morbidity and Mortality Weekly Report (MMWR) Week by the sentinel sites and are subject to change as sites back-report or update previously submitted weekly data.

Percent of ILI Reported by Type of Sentinel Outpatient Facility, Indiana, 2015-2016 Season			
MMWR Week	All Reporters %ILI (n)	Universities %ILI (n)	Non-Universities %ILI (n)
<b>8</b>	2.70% (21)	2.95% (6)	2.57% (15)
<b>7</b>	2.19 (23)	3.08 (8)	1.89 (15)
<b>6</b>	1.41 (24)	1.06 (8)	1.58 (16)

Percent of ILI Reported by Age Category in Sentinel Outpatient Facilities, Indiana, 2015-2016 Season		
Age Category, years	Total Number of ILI	Percent of ILI
0-4	35	24.65%
5-24	86	60.56
25-49	14	9.86
50-64	5	3.52
65+	2	1.41
Total	142	--





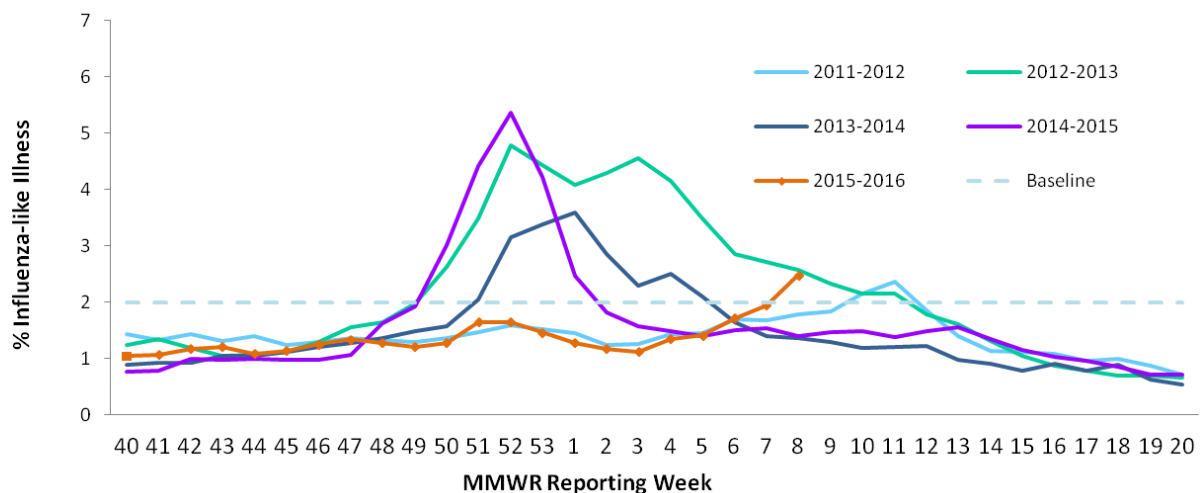
## Indiana State Department of Health

### **SYNDROMIC SURVEILLANCE SYSTEM**

Data are obtained from hospital emergency department chief complaint data through the Indiana Public Health Emergency Surveillance System (PHESS). Data are reported on a weekly basis for the previous Morbidity and Mortality Weekly Report (MMWR) Week and are subject to change as hospitals back-report or update previously submitted weekly data.

Percent of ILI Reported in Emergency Departments by District, Indiana, 2015-2016 Season		
	Previous MMWR Week	Current MMWR Week
Indiana	1.94%	2.48%
District 1	2.55	3.22
District 2	2.26	3.40
District 3	1.34	1.20
District 4	2.40	2.34
District 5	1.60	2.31
District 6	2.38	2.92
District 7	2.15	2.70
District 8	1.22	1.79
District 9	2.79	2.54
District 10	1.31	1.89

**Percent of Patients with Influenza-Like Illness (ILI) Chief Complaint in Emergency Departments, Indiana, 2015-2016**





## Indiana State Department of Health

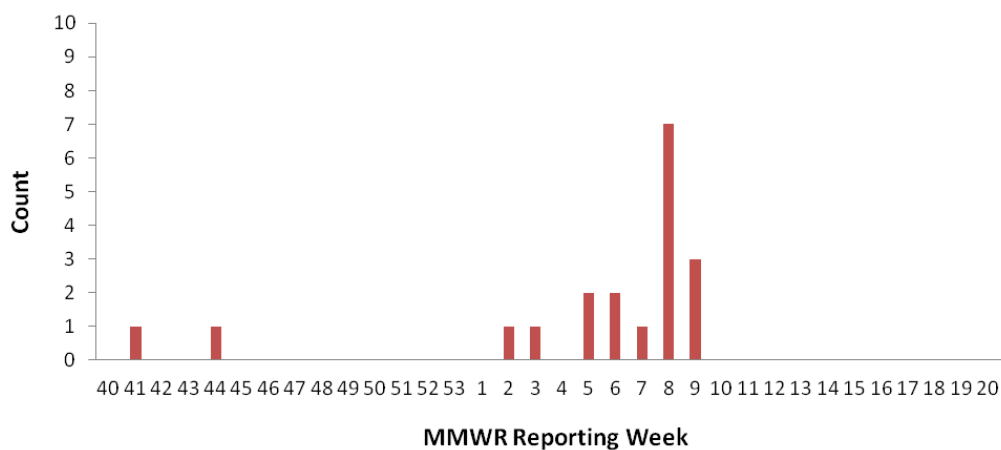
### **INFLUENZA-ASSOCIATED MORTALITY**

Data are obtained from the Indiana National Electronic Disease Surveillance System (I-NEDSS). Influenza-associated deaths are reportable within 72 hours of knowledge; however, not all cases are reported in a timely manner so data in this report as subject to change as additional cases are back-reported.

Number of Laboratory Confirmed Influenza-Associated Deaths for All Ages, Indiana, 2015-2016 Season	
Age Category, years	Season Total
0-4	0
5-24	2
25-49	1
50-64	11
65+	5
Total	19

Counties with ≥5 Laboratory Confirmed Influenza-Associated Deaths for All Ages, 2015-2016 Season			
County	Season Total	County	Season Total
Lake	5		

**Number of Reported Influenza-Associated Deaths by Week of Death, All Ages,  
Indiana, 2015-16**





# Indiana State Department of Health

## **VIROLOGIC SURVEILLANCE VIROLOGIC SURVEILLANCE**

Circulating Influenza Viruses Detected by ISDH Laboratory*, Indiana, 2015-2016 Season				
PCR Result	Week 8		Season Total	
	Number	Percent of Specimens Received	Number	Percent of Specimens Received
2009 A/H1N1pdm virus	31	55.4%	78	22.7%
Influenza A/H3 seasonal virus	9	16.1%	55	16.0%
Influenza A/H1 seasonal virus	0	0%	0	0%
Influenza B seasonal virus	1	1.8%	4	1.2%
Influenza negative	14	25%	194	56.6%
Inconclusive	1	1.8%	3	<1.0%
Unsatisfactory specimen <sup>†</sup>	0	0%	9	2.6%
Influenza Co-infection <sup>Δ</sup>	0	0%	0	0%
<b>Total</b>	<b>56</b>	<b>100%</b>	<b>343</b>	<b>100%</b>

\* Data obtained from the ISDH Laboratory via specimens submitted from the ISDH Sentinel Influenza Surveillance System and IN Sentinel Laboratories.

<sup>†</sup> Unsatisfactory specimens include specimens that leaked in transit, were too long in transit, or were inappropriately labeled.

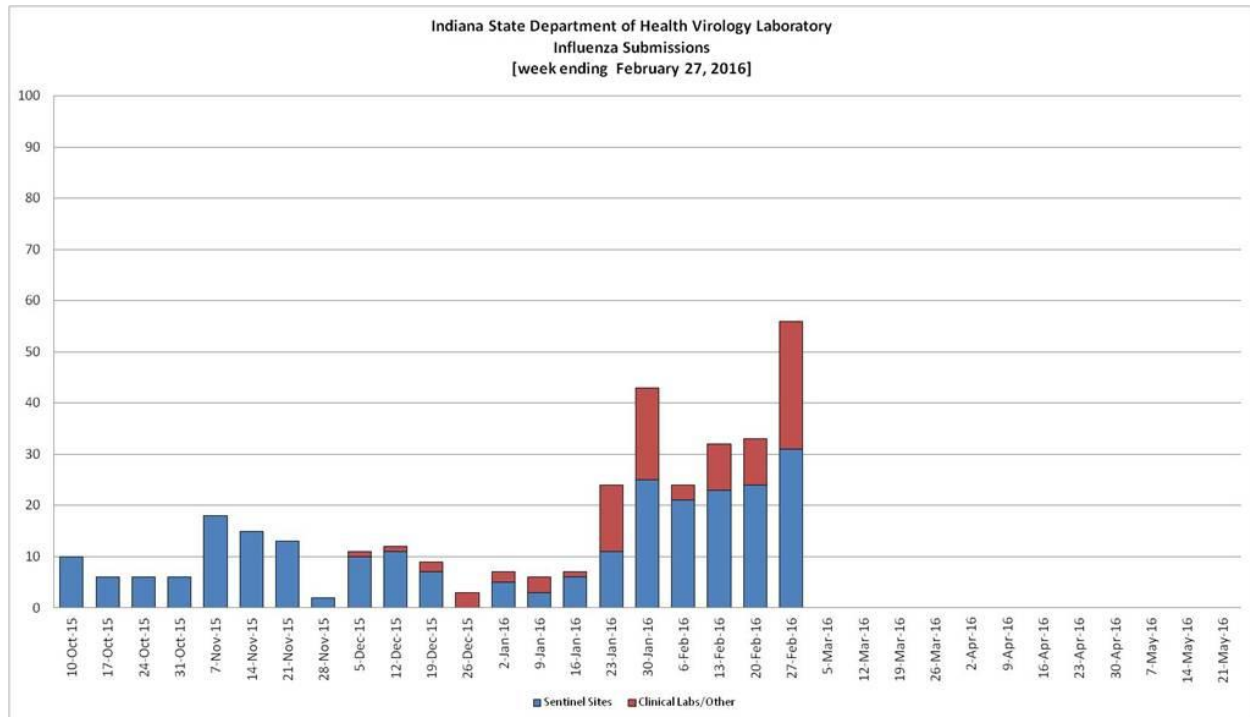
<sup>Δ</sup> All previous-year co-infections have been influenza A/H3 and influenza B.

Circulating Non-Influenza Viruses Detected by the ISDH Laboratory, Indiana, 2015-2016 Season			
Result	Week 8	Season Total (Since 10/1/15)	Early Surveillance (9/1/15 - 9/30/15)
<b>Adenovirus</b>	0	6	0
<b>Coronavirus 229E</b>	0	0	0
<b>Coronavirus HKU1</b>	0	0	0
<b>Coronavirus NL63</b>	0	0	0
<b>Coronavirus OC43</b>	0	0	0
<b>Enterovirus NOS</b>	0	0	0
<b>Enterovirus/Rhinovirus</b>	0	2	1
<b>Human Metapneumovirus</b>	0	0	0
<b>Parainfluenza 1 Virus</b>	0	1	1
<b>Parainfluenza 2 Virus</b>	0	1	0
<b>Parainfluenza 3 Virus</b>	0	1	0
<b>Parainfluenza 4 Virus</b>	0	1	0
<b>Rhinovirus</b>	0	0	0
<b>Respiratory Syncytial Virus</b>	0	1	0
<b>Total</b>	<b>0</b>	<b>13</b>	<b>2</b>



# Indiana State Department of Health

## VIROLOGIC SURVEILLANCE (GRAPH)





## Indiana State Department of Health

### **FLU REVIEW**

#### **Flu Vaccine Resources**

- On Monday, March 7 from 1-2 PM (ET), @CDCFlu and @TheKidsDoctor will co-host a Twitter chat discussing flu prevention methods for children of all ages, including vaccination, prompt use of antiviral drugs, and flu resources for parents and caregivers of children. To participate in the chat, please use the hashtag #FluFreeKids.
- As part of the [“Current Issues in Vaccines”](#) series, a one-hour webinar will be offered on Wednesday, March 23 beginning at 12:00 PM (ET). Paul Offit, MD, the director of the Vaccine Education Center (VEC) at the Children's Hospital of Philadelphia, will present. Among the featured vaccine topics will be an update on influenza vaccines and egg allergies. Free continuing education credits (CME, CEU, and CPE) will be available for both the live and archived events. [Registration is currently available.](#)
- The National Foundation for Infectious Diseases (NFID) is offering its [Spring 2016 Clinical Vaccinology Course](#) on March 18-20 in Phoenix, AZ. The course will cover vaccine updates, developments, and immunization strategies. Several types of continuing education credit are available, and [registration is open.](#)

#### **Flu News and Related Studies**

- Influenza activity in the United States continues to increase, and has now been elevated above the baseline for five consecutive weeks. All ten regions of the country are experiencing elevated activity levels. Twenty-one states have now reported widespread flu activity, eighteen states (including Indiana) have reported regional flu activity, and ten states have reported local influenza activity. View the [map](#) of weekly influenza activity in the U.S. and the latest [FluView report](#) for more about current influenza activity, trends, and impact throughout the United States (CDC).
- The World Health Organization (WHO) has released two [recommendation reports](#), the first concerning suggested composition of influenza virus vaccines for the 2016-17 season, and the second regarding characteristics of zoonotic influenza viruses and candidate vaccine viruses. Also of interest is the WHO [risk assessment for seasonal influenza A\(H1N1\)pdm09 virus](#), based on data through February 7, 2016.
- According to an analysis of data from the U.S. National Immunization Survey-Flu, the vast majority of vaccinated children receive their influenza vaccination at a doctor's office; however, clinic/health center vaccination rates are highest among children at or below the poverty level. Place of vaccination also varies greatly by children's age, race/ethnicity, income, and Metropolitan Statistical Area ([Vaccine](#)).

#### **For Further Information, Visit:**

[www.in.gov/isdh/25462.htm](http://www.in.gov/isdh/25462.htm)

[www.cdc.gov/flu](http://www.cdc.gov/flu)

[www.flu.gov](http://www.flu.gov)